



**ELEKTRONIK SYSTEM**

*Piotr Cieśliński*

ul. Ustronna 14  
89-606 Charzykowy

+48 608 34 34 34  
elektron@metaldetektor.pl

## II LAMP X-RAY SCANNER ELEKTRON-SXRF-2080II

- ▶ High-spectrum X-Ray scanner "DUAL" dedicated to the examination of products in an upright position, i.e. bottles, jars with metal caps, tall cans, etc.
- ▶ Two horizontal X-Ray beams, intersecting at 90 degrees, eliminate the formation of blind spots to the maximum extent. Contamination titled under the cap or in package cavities is visible in two planes, enabling effective detection.
- ▶ Possibility to create several independent detection areas for selected product zones (e.g. top, middle or bottom of product).



## ARTIFICIAL INTELLIGENCE - OPTIONAL

X-Ray scanner equipped with artificial intelligence support, which much more accurately than a human analysing the comparison data with tremendous computational speed. The AI robot learns to recognise and eliminate foreign bodies, errors, damage, deficiencies much more accurately than competitor scanners.

<b>Model</b>	<b>ELEKTRON-SXRF</b>
<b>Two X-Ray lamps</b>	MAX. 480W/120kV
<b>Maximum width of the tested product</b>	200 mm
<b>Maximum height of the tested product</b>	250 mm
<b>The smallest possible detectable testers</b>	Steel ball from 0.5 mm Steel wire from 0.3*2mm Glass/Ceramic ball from 1.5 mm
<b>Transporter speed</b>	10-60 m/min
<b>Operating system</b>	Windows 7
<b>Radiation protection</b>	Protective tunnel
<b>External radiation</b>	< 0,5 µSv/h
<b>Tightness class</b>	IP66
<b>Working temperature</b>	Od -10 do +40 °C
<b>Operating humidity</b>	30 ~ 90 %
<b>Cooling</b>	Industrial air conditioner
<b>Air pressure</b>	0,6 - 0,8 Mpa
<b>Power supply</b>	3,5 kW
<b>Material</b>	Glass-blasted stainless steel

## MAIN FEATURES

- Two-lamp and two-receiver control system.
- Touchscreen for easy operation and management of functions (possibility to fine-tune manual parameter settings).
- Detection of glass in glass (bottles, jars) and metal in metal packaging (cans).
- Possibility of filling level testing.
- Possibility of applying a mask to exclude parts of the package not subject to inspection, e.g. bottle wall, increasing the detection level.
- High conveyor belt speed allows large volumes of product to be tested.
- Intuitive and very simple operation.
- Remote 24-hour service support regardless of location.

## SYSTEM FUNCTIONS

- 2 password-protected access levels.
- The operator can manually adjust the settings.
- Detection of defective products with damage (deformed product, crumpled can, missing or defective product).
- Optional product weight check - the X-Ray scanner detects products with abnormal weight from as little as 1-5 g depending on product type.
- Quick and precise separation of contaminated or defective product.
- Automatic diagnostics and safety control system (detection of an open inspection door in the unit and immediate shutdown of the unit and switching off of the X- Ray tube radiation).

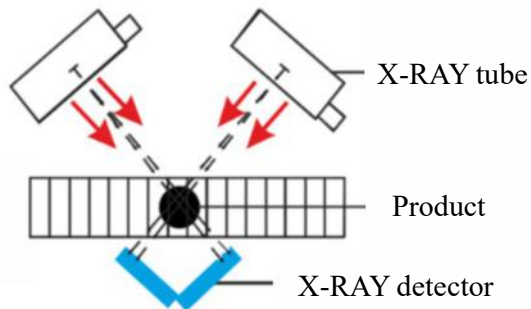
## „FROST” SYSTEM

In the low temperature zone, the X-Ray scanner can be equipped with a feature not found in other devices, **"FROST" system** - temperature and humidity control system inside control system housings. A system that protects electronic circuits against moisture, cold and sudden temperature changes while washing. Protects against moisture absorption inside (e.g. a cold machine washed with hot water).

## LIST OF COMPONENTS

FUNCTION	NAME	PRODUCER
X-Ray source	X-Ray generator	VJ TECHNOLOGIES
X-Ray receiver	X-Ray detector	DETECTION TECHNOLOGY
Device management	17" touch monitor	ADVANTECH
Data processing	Industrial computer	ADVANTECH
Temperature and wetness control	Air conditioner	RITTAL
Conveyor belt drive	Engine with gear	ORIENTAL MOTOR
Speed regulation	Engine controller	ORIENTAL MOTOR
Electric protection	Miniature circuit breakers	SCHNEIDER ELECTRIC /ABB
Connection between devices	Military connectors	PLT
Safety management	Limit switches	OMRON
Automation management	PLC driver	SCHNEIDER ELECTRIC
Warning information	Optical-acoustic signaller	WERMA

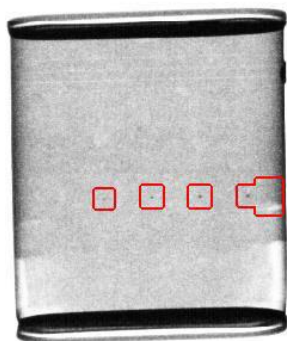
# LAMP SETUP DIAGRAM



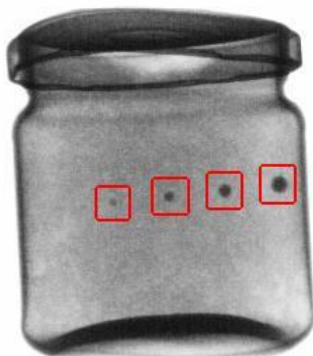
Technological connection of two beams testing the product ensures high detection level.

## SCANNER INSPECTION IMAGE X- RAY ELECTRON-SXRF-2080II

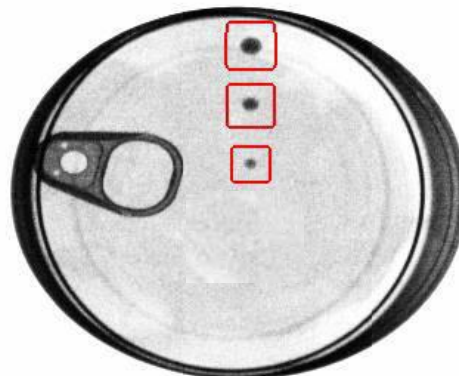
NON-FERROUS  
from 0,6mm



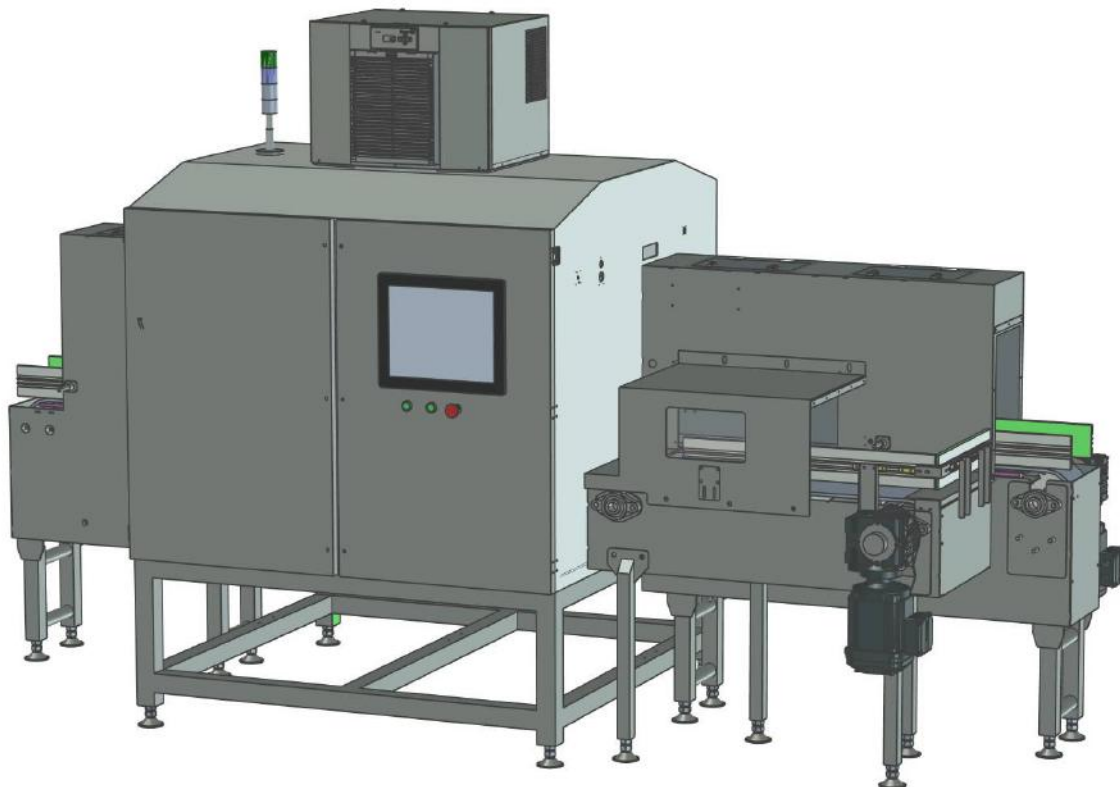
GLASS  
from 2,0mm

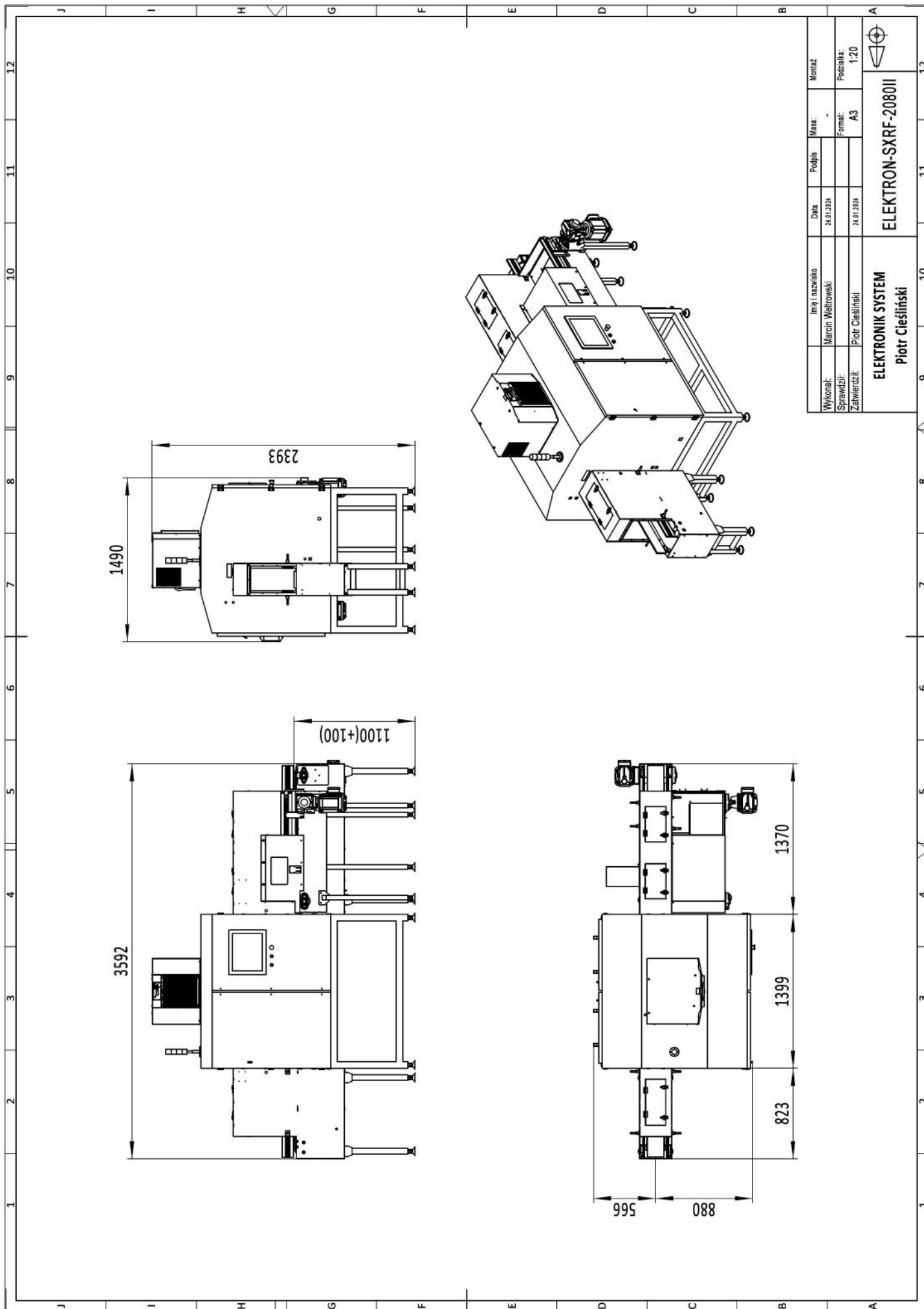


CERAMICS  
from 3,0mm



## 3D DRAWING OF ELEKTRON-SXRF-2080II





Wykonał:	Imię i nazwisko	Data	Podpis	Masa:	Monaz
Sprawdził:	March Witkowski	24.07.2024		-	
Zatwierdził:	Piotr Cieślński	24.07.2024		Format:	Podziałka:
				A3	1:20
<b>ELEKTRON SYSTEM</b> Piotr Cieślński			<b>ELEKTRON-SXRF-2080II</b>		