**I LAMP X-RAY SCANNER ELEKTRON-SXRF**

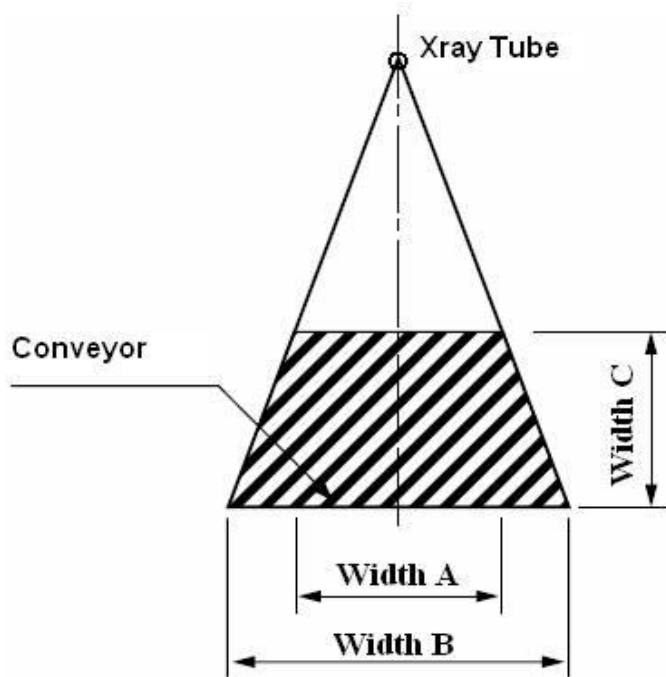
- ▶ This state-of-the-art X-Ray scanner series is designed for the examination of products packaged in regular and irregular packaging, metallization and even flat metal cans.
- ▶ The device, scans products in irregular drift, detects packaging errors, defects, dents, incorrect weight with high accuracy.
- ▶ Very easy and intuitive operation.
- ▶ The high-powered ionising radiation lamp used, ensures longer life of the entire X-Ray scanner.
- ▶ Using artificial intelligence technology, the X-Ray scanner is almost maintenance-free.
- ▶ Easy and quick cleaning design. Conveyor belt removable and attachable in tens of seconds, conveyor rollers quick to install and remove.
- ▶ Highest level of safety, complying with European CE standards as well as the US FDA, optionally UL/CSA.
- ▶ We can adapt the design of the X-Ray scanner to the maximum extent in accordance with our customers' requirements (longer conveyor, higher IP level, SUS316 design, conveyor height).

**ARTIFICIAL INTELLIGENCE - OPTIONAL**

The X-Ray scanner can be equipped with the support of artificial intelligence, which analyses the comparison data much more accurately than a human with tremendous computational speed. The AI robot learns to recognise and eliminate foreign bodies, errors, damage, deficiencies much more accurately than competitor scanners.

| Model | ELEKTRON-SXRF |
|--|---|
| Specification | 4080 |
| Maximum height of the test product | 220 mm |
| Maximum width of the test product | 400 mm |
| X-Ray lamp | Max. 80kV 350/480 W |
| The smallest possible detectable testers | St/st ball from 0.3 mm, wire from 0.2x1 mm Glass/Ceramics ball from 1.0 mm |
| Belt speed | Adjustable in the range of 0-60 m/min |
| Connection | port LAN, port USB |
| Product management | Automatic recording of parameters of the tested product |
| Image management | Automatic image recording and analysis |
| Display | 17" touch screen |
| Cooling | Industrial air conditioner |
| Radiation protection | Protective tunnel and security system |
| External radiation | < 1µSu/h |
| Working temperature | od -10°C do 40 °C |
| Operating humidity | 30-90% non-condensed water vapor |
| Supply voltage | 230 VAC |
| Power consumption | 1200 W |
| Tightness class | IP65 |
| Air pressure | 6-8 bar |
| Housing material | Glass-blasted stainless steel |

SELECTING AN X-RAY SCANNER



| Model | SXRF-4080 |
|---------------------|--------------------|
| Products height (A) | Products width (B) |
| 0 mm | 400 mm |
| 10 mm | 390 mm |
| 20 mm | 380 mm |
| 30 mm | 371 mm |
| 40 mm | 361 mm |
| 50 mm | 351 mm |
| 60 mm | 341 mm |
| 70 mm | 331 mm |
| 80 mm | 322 mm |
| 90 mm | 312 mm |
| 100 mm | 302 mm |
| 110 mm | 292 mm |
| 120 mm | 282 mm |
| 130 mm | 272 mm |
| 140 mm | 263 mm |
| 150 mm | 253 mm |
| 160 mm | 244 mm |
| 170 mm | 234 mm |
| 180 mm | 224 mm |
| 190 mm | 214 mm |
| 200 mm | 204 mm |
| 210 mm | 194 mm |
| 220 mm | 185 mm |

We select the type and type of X-Ray scanner accordingly with customer requirements. Product dimension must be included in the detection cone according to the table below.

EXAMPLE OF SEPARATORS

Pusher

Separator in the form of a pusher with a lockable container.



Pusher

Separator in the form of a pusher with a conveyor roller conveyor.



Single separator

Separator in the form of a dropping conveyor for rejecting products fed in a single row.



Double separator

Separator in the form of two dropping conveyors for reject products fed in two rows.



MAIN FEATURES

- Very high level of detection and unparalleled operating stability when scanning products of different shapes entering irregularly or even drifting.
- Touchscreen for easy operation and management of functions (possibility to fine-tune manual parameter settings).
- Detection of all metals, stones, glass, ceramics, rubber, hard plastics.
- Intuitive and simple operation.
- Smooth management of each detection zone increasing the level and quality of scanning.
- Remote 24-hour service support regardless of location.

SYSTEM FUNCTIONS

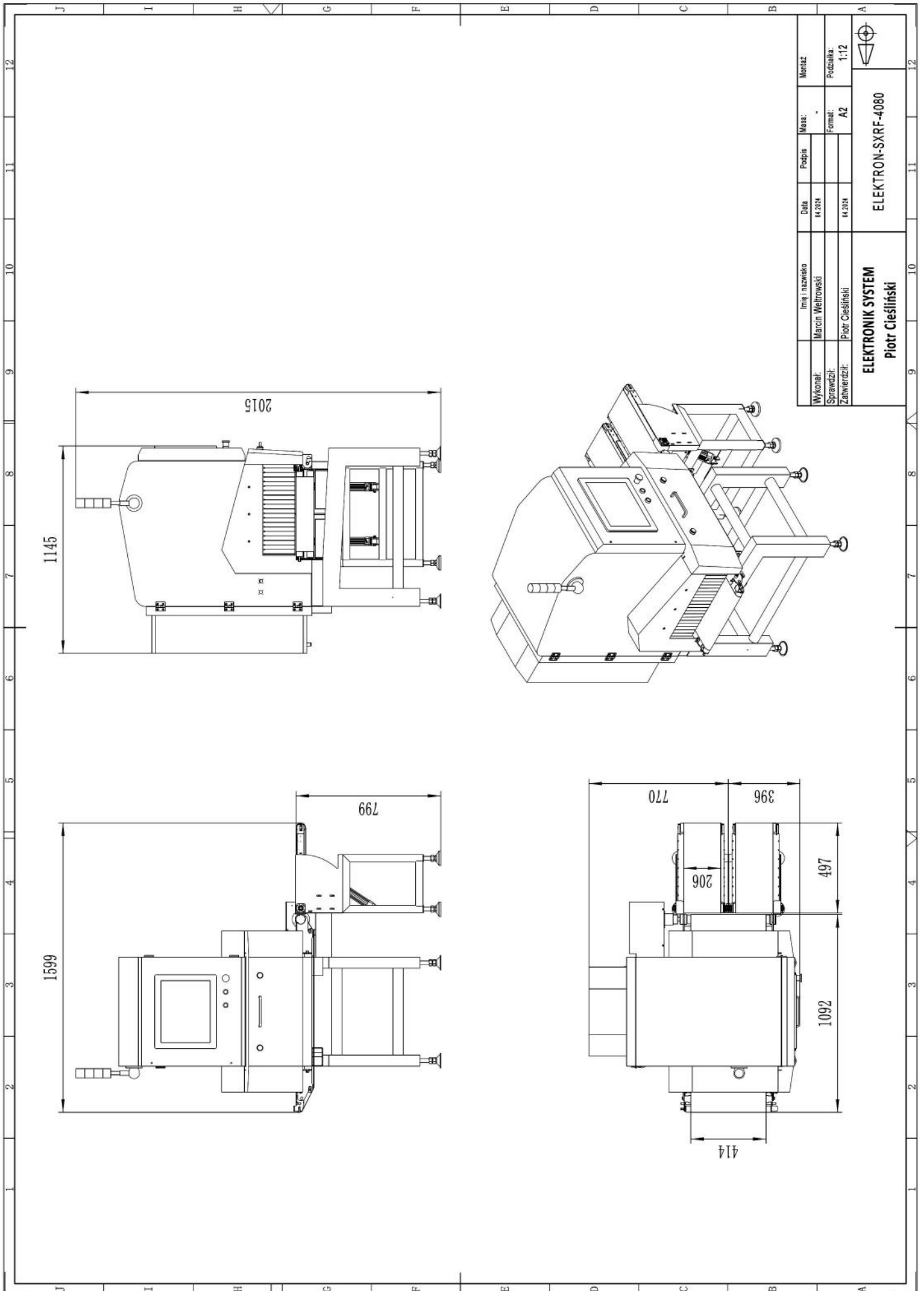
- 2 password-protected access levels.
- The operator can manually adjust the settings.
- Detection of defective products with damage (deformed product, crumpled can, no product or defective product).
- Built-in weight controller - X-Ray scanner eliminates products with incorrect weight from 1-5 grams depending on the type of product.
- Possibility of cooperation with any separator.
- Automatic diagnostics and safety control system (detection of open inspection doors in the device and immediate stopping of the device and turning off the X-Ray lamp radiation).

„FROST” SYSTEM

In the low temperature zone, the X-Ray scanner can be equipped with an unprecedented "FROST" system - a system for controlling the temperature and humidity inside the enclosures of the control systems. A system that protects the electronics against humidity and cold and abrupt temperature changes during cleaning. It prevents the absorption of moisture inside (e.g. a cold machine washed with hot water).

LIST OF COMPONENTS

| FUNCTION | NAME | PRODUCER |
|---------------------------------|----------------------------|-------------------------|
| X-Ray source | X-Ray generator | VJ USA |
| X-Ray receiver | X-Ray detector | DT FINLANDIA |
| Device management | 17" touch monitor | ADVANTECH |
| Data processing | Industrial computer | ADVANTECH |
| Temperature and wetness control | Air conditioner | RITTAL |
| Conveyor belt drive | Engine with gear | ORIENTAL MOTOR |
| Speed regulation | Engine controller | ORIENTAL MOTOR |
| Electric protection | Miniature circuit breakers | SCHNEIDER ELECTRIC /ABB |
| Connection between devices | Military connectors | PLT |
| Safety management | Limit switches | OMRON |
| Automation management | PLC driver | SCHNEIDER ELECTRIC |
| Warning information | Optical-acoustic signaller | WERMA |



| Wykonal: | Imię i nazwisko | Data | Podpis | Masa: | Montaż |
|---|-------------------|---------|--------|---------|---------|
| Sprawdził: <td>Marcin Wełtrowski</td> <td>04.2024</td> <td></td> <td>-</td> <td></td> | Marcin Wełtrowski | 04.2024 | | - | |
| Zatwierdził: <td>Piotr Cieśliński</td> <td>04.2024</td> <td></td> <td>Format:</td> <td>Format:</td> | Piotr Cieśliński | 04.2024 | | Format: | Format: |
| | | | | A2 | 1:12 |

ELEKTRON-SXRF-4080

ELEKTRONIK SYSTEM
Piotr Cieśliński