



I LAMP X-RAY SCANNER ELEKTRON-SXRF-2480

- ▶ This state-of-the-art series of X-ray scanners is designed for examining products packed in regular and irregular packaging, metallization and even flat metal cans.
- ▶ The device scans products in irregular packaging, detects packaging errors, defects, dents, detects incorrect weight with high accuracy.
- ▶ Selectable power of the ionising radiation lamp up to 350W, which ensures longer life of the entire X-ray scanner.
- ▶ Very easy and intuitive operation.
- ▶ The use of artificial intelligence technology makes the X-ray scanner almost maintenance-free.
- ▶ Easy and quick cleaning. Conveyor belt removable and attachable in seconds, conveyor rollers quick to install and remove.
- ▶ Highest level of safety, compliance with European CE standards, as well as American FDA, optionally UL/CSA.
- ▶ We can customise the design of the X-ray scanner to the maximum extent according to our customers' requirements (longer conveyor, higher IP level, SUS316 design, conveyor height).



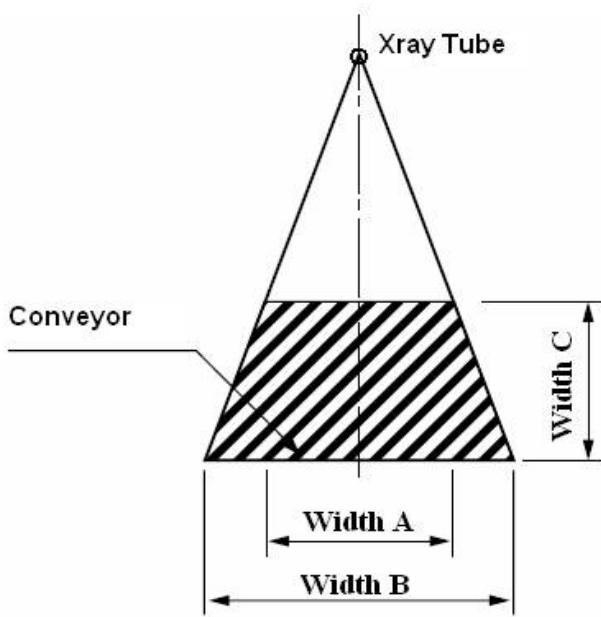
ARTIFICIAL INTELLIGENCE- OPTIONAL

The X-Ray scanner can be equipped with artificial intelligence support, which much more accurately than a human analyzes the comparison data with tremendous computational speed. The AI robot learns to recognise and eliminate foreign bodies, errors, damage, deficiencies much more accurately than scanners of competing companies. AI significantly increases the level of detection and improves the accuracy of weighing a product of fixed form and shape.

| Model | ELEKTRON-SXRF-2480 |
|--|--|
| Maximum height of the test product | 160mm |
| Maximum width of the test product | 240mm |
| X-ray lamp | 210W, 350W |
| The smallest possible detectable testers | St/st ball from 0.3 mm, wire from 0.2x2 mm Glass/Ceramic ball from 1.0 mm |
| Tape speed | Adjustable in the range of 10-60 m/min |
| Communication ports | LAN port, USB port |
| Product management | Automatic recording of the parameters of the tested product |
| Image management | Automatic image saving and analysis |
| Display | 17" touch screen |
| Cooling | Industrial air conditioner |
| Recoil type | Pneumatic separator |
| Radiation protection | Protective tunnel and security system |
| External radiation | < 1µSu/h |
| Working temperature | from 0°C to 40°C |
| Working humidity | 30-90% non-condensing water vapor |
| Supply voltage | 230VAC |
| Power consumption | 1200W |
| Tightness class | IP65 |
| Housing material | Glass-blasted stainless steel |

SELECTING AN X-RAY SCANNER

The type and type of the X-Ray scanner are selected according to the customer's requirements. The product dimension must be entered in the detection cone according to the table below.



| | |
|---|--------|
| A | 180 mm |
| B | 240 mm |
| C | 160 mm |

| Product height(A) | Product width (B) |
|-------------------|-------------------|
| 0 mm | 240 mm |
| 10 mm | 236 mm |
| 20 mm | 233 mm |
| 30 mm | 229 mm |
| 40 mm | 225 mm |
| 50 mm | 221 mm |
| 60 mm | 217 mm |
| 70 mm | 214 mm |
| 80 mm | 210 mm |
| 90 mm | 206 mm |
| 100 mm | 202 mm |
| 110 mm | 198 mm |
| 120 mm | 194 mm |
| 130 mm | 191 mm |
| 140 mm | 188 mm |
| 150 mm | 184 mm |
| 160 mm | 180 mm |

EXAMPLES OF SEPARATORS

Pusher

Pusher shaped separator with a lockable container.



Pusher

Separator in the form of a bulldozer with a conveyor roller conveyor.



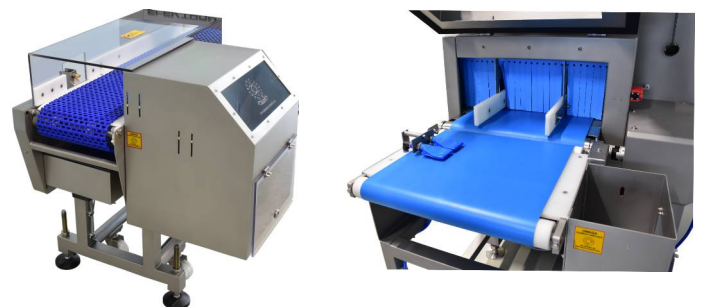
Single separator

Separator in the form of a dropping conveyor for rejecting products fed in a single row.



Separator with blower

Separator in the form of a conveyor with an air blower, designed for the separation of light products.



MAIN FEATURES

- Very high level of detection and unparalleled operating stability when scanning products of different shapes entering irregularly or even drifting.
- Touchscreen for easy operation and management of functions (possibility to fine-tune manual parameter settings).
- Detection of all metals, stones, glass, ceramics, rubber, hard plastics.
- Intuitive and simple operation.
- Smooth management of each detection zone increasing the level and quality of scanning.
- Remote 24-hour service support regardless of location.

SYSTEM FUNCTIONS

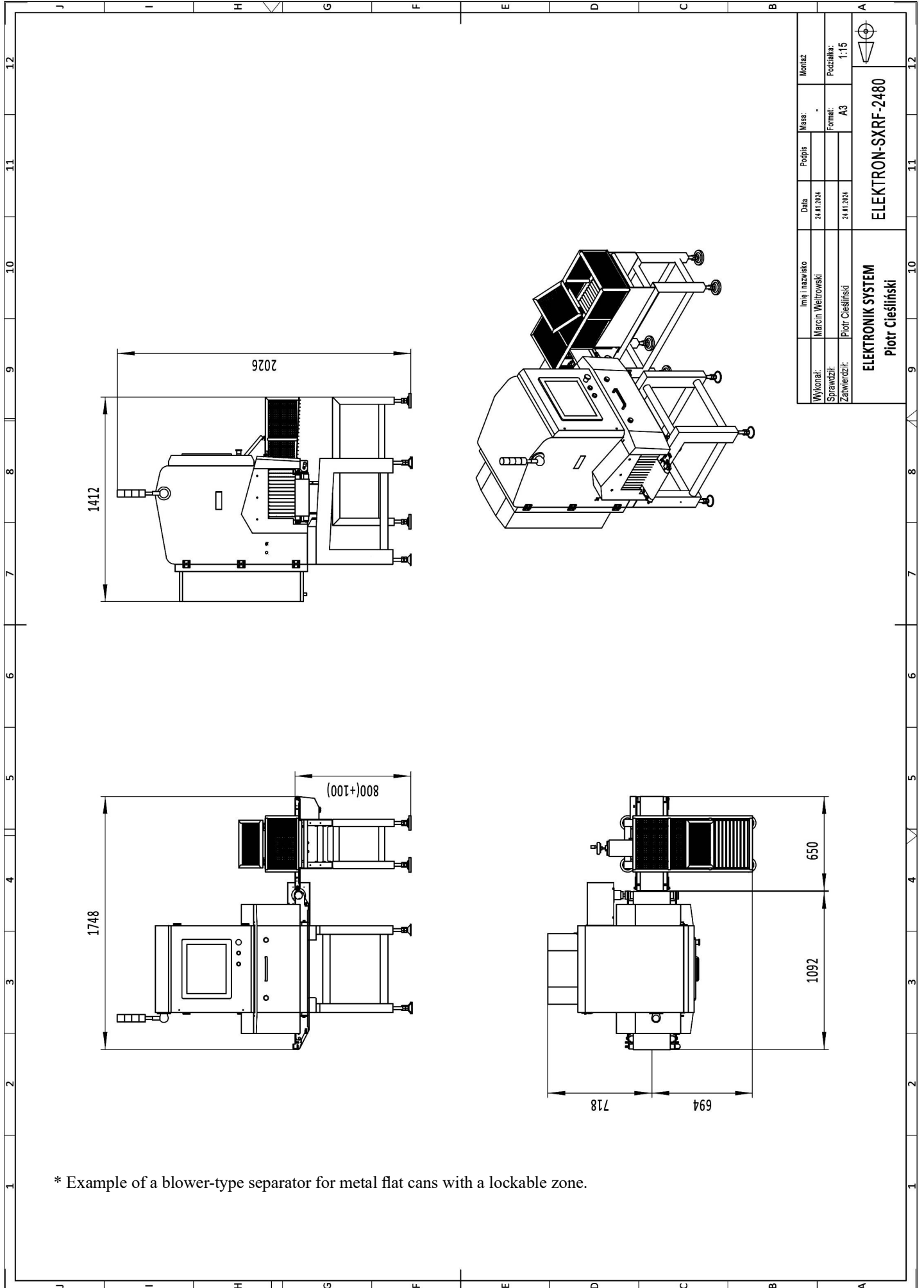
- 2 password-protected access levels.
- The operator can manually adjust the settings.
- Detection of defective products with damage (deformed product, crumpled can, no product or defective product).
- Built-in weight controller - X-Ray scanner eliminates products with incorrect weight from 1-5 grams depending on the type of product.
- Possibility of cooperation with any separator.
- Automatic diagnostics and safety control system (detection of open inspection doors in the device and immediate stopping of the device and turning off the X-Ray lamp radiation).

„FROST” SYSTEM

In the low temperature zone, the X-Ray scanner can be equipped with an unprecedented "FROST" system - a system for controlling the temperature and humidity inside the enclosures of the control systems. A system that protects the electronics against humidity and cold and abrupt temperature changes during cleaning. It prevents the absorption of moisture inside (e.g. a cold machine washed with hot water).

LIST OF COMPONENTS

| FUNCTION | NAME | PRODUCER |
|---------------------------------|----------------------------|--------------------------|
| X-Ray source | X-Ray generator | VJ USA |
| X-Ray receiver | X-Ray detector | DT FINLANDIA |
| Device management | 17" touch monitor | ADVANTECH |
| Data processing | Industrial computer | ADVANTECH |
| Temperature and wetness control | Air conditioner | RITTAL |
| Conveyor belt drive | Engine with gear | ORIENTAL MOTOR |
| Speed regulation | Engine controller | ORIENTAL MOTOR |
| Electric protection | Miniature circuit breakers | SCHNEIDER ELECTRIC / ABB |
| Connection between devices | Military connectors | PLT |
| Safety management | Limit switches | OMRON |
| Automation management | PLC driver | SCHNEIDER ELECTRIC |
| Warning information | Optical-acoustic signaller | WERMA |



* Example of a blower-type separator for metal flat cans with a lockable zone.

| | | | | |
|------------------------|-------------------|---------------------------|---------|------------|
| Wykonał: | Imię i nazwisko | Data | Masa: | Montaż |
| Sprawił: | Marcin Weitrowski | 24.01.2024 | - | |
| Zatwierdził: | Piotr Cieśliński | 24.01.2024 | Format: | Podziałka: |
| | | | A3 | 1:15 |
| ELEKTRON SYSTEM | | ELEKTRON-SXRF-2480 | | |
| Piotr Cieśliński | | | | |