



ELEKTRONIK SYSTEM

Piotr Cieślinski

ul. Ustronna 14
89-606 Charzykowy

+48 608 34 34 34
elektron@metaldetektor.pl

METAL DETECTORS WITH STAND PROBE

- ▶ The metal detector has been specially designed for testing products that are tall when standing up (e.g. jars without lids, plastic and glass bottles, tall paper or plastic bags).
- ▶ What sets us apart:
 - 10-year warranty on the metal detector probe,
 - unparalleled non-contact autosensing system,
 - built-in auto-calibration system - no periodic maintenance required,
 - FROST" system,
 - high level of detection and stability of the device's operation.
- ▶ Thanks to the use of adjustable side boards, the product in the standing position passes stably through the metal detector probe.



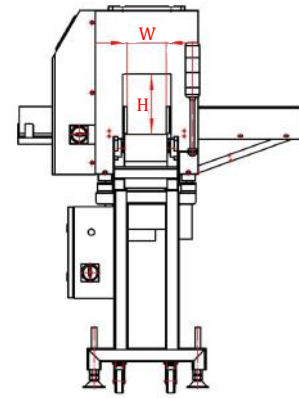
Model		ELEKTRON-MD
Detection level (depending on probe size)	Fe	od Ø 0,8 mm
	NoFe	od Ø 1,0 mm
	St/st	od Ø 1,2 mm
Maximum load		10 kg/m ²
Standard conveyor length		1500 mm (other length optional)
Standard conveyor height		800+100 mm (other height optional)
Operator Panel		HMI touch screen (analog buttons optional)
Type of conveyor belt		Modular (polyurethane optional)
The direction of the conveyor's work		Left to Right (Right to Left Optional)
Type of control panel cover sides		Polycarbonate (optional stainless steel) Fixed (optional adjustable)
Pollution detection signaling		Optical-acoustic alarm and conveyor belt stop
Conveyor belt speed		Adjustable in the range of 0-35 m/min (optionally fixed)
"FROST" system		Option
Power		230V, 50HZ
Working temperature		0-45°C
Material		Glass-blasted stainless steel

MAXIMUM DIMENSIONS TESTED PRODUCTS

ELEKTRON-MD	1520, 1530, 1540	1820, 1830, 1840
Height [mm]	150	180
Width [mm]	200, 300, 400	200, 300, 400

SYSTEM FUNCTIONS

- Menu in Polish and English (standard).
- Optional menu in all other languages indicated by the client.
- Detection and alarm history, date and time.
- USB port for reading data to a pendrive.
- Memory function for testing 100 different ones products.
- Auto learning system.
- Automatic system self-calibration.
- Automatic correctness enforcement system detection.
- Stopping and reversing the tape upon detection metal - optional.
- Password protected access levels.
- Confirmation of discharge of contaminated product and full container signal.



AUTO LEARNING SYSTEM

The **ELEKTRON-MD** series of detectors has a unique the **self-learning system** that is used in other detectors contactless. Self-learning system analyzes the tested product and automatically saves the detection parameters (e.g. the influence of the product and ambient background). Control detector the conveyor automatically moves the product through the detection probe window back and forth until graduation. This solution makes your work easier especially with heavy products. Thanks to this learning is much more accurate without interruption and also increases the level of detection and stability metal detector operation.

AUTOCALIBRATION SYSTEM

Metal detectors of our production have built-in **auto-calibration system**, thanks to which devices do not require constant inspections service. The detection system accurately oscillates at the frequency of the test substance, he himself has variable values. management system, it is designed so that with each disconnecting the detector from the mains for about 15 minutes automatically performed background analysis and same system calibration after reboot.

"FROST" SYSTEM

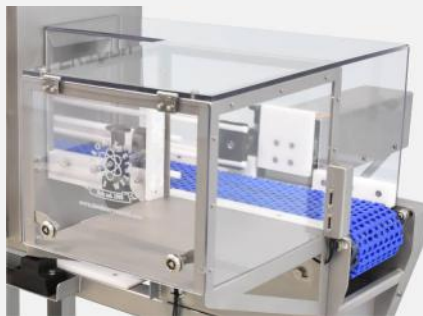
Our metal detectors can be equipped with unheard of in other detectors, the **system "FROST"** with a built-in intelligent heating and thermostat, inside the panel control that protects internal systems electronics against moisture and cold. It is the only protection against abrupt changes temperatures during washing and protects against absorption of moisture inwards (e.g. cold machine washed with hot water).

TYPES OF RECOIL SYSTEMS



Blower

Very efficient and ergonomic system for light products up to 0.5 kg.



Pusher

Commonly used rejection system for packaged products. We offer pusher for products from 1 kg to 60 kg.



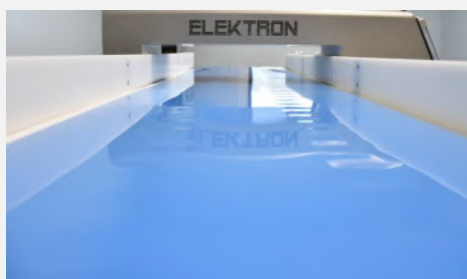
Scraper arm (Flipper)

Quick kick-back system to save installation space for products up to 2 kg.



Modular tape

used for difficult work conditions. Quick disassembly and possibility of easy washing of the tape makes it easy to keep the device in purity.



Polyurethane tape

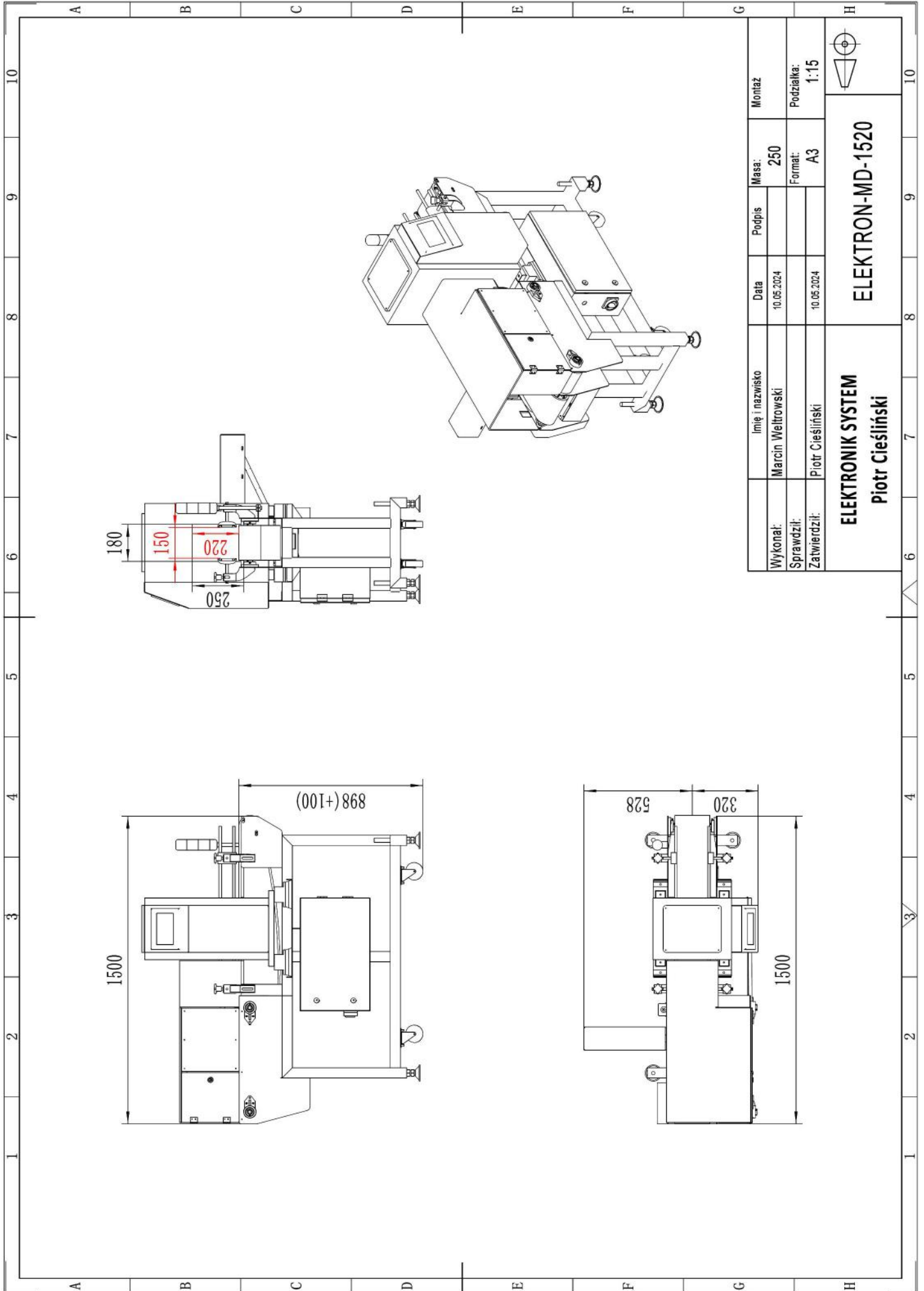
is used for transport of loose products or unpackaged products.




Adjustable sides

enable priming of the product, mainly used for no separator.





Wykonat:		Imię i nazwisko		Data		Masa:		Montaż	
Sprawdził:		Marcin Weltrowski		10.05.2024		250			
Zatwierdził:		Piotr Cieśliński		10.05.2024				Podziałka:	
								1:15	
									
		ELEKTRONIK SYSTEM						ELEKTRON-MD-1520	
		Piotr Cieśliński							